

Mr W. Roberts

# Seasonal Sight-Reading for 'cello

**ABRSM guidance on difficulty at grade 1\***

A four-bar piece in 4/4 or 3/4, or a six-bar piece in 2/4, in G or D majors, in 1st position (no use of C string).

All notes separately bowed.

Simple dynamics (*f*, *mf*, *p*), note values (minims, crotchets, quavers) and rests (crotchet rests).

**ABRSM guidance on difficulty at grade 2\***

An eight-bar piece, time and key signatures as Grade 1 with the addition of C major and A natural minor.

Further use of 1st position.

Notes separately bowed or with simple two-note slurs.

Addition of *mp*, 'hairpins' (*cresc./dim.*), dotted minim, and minim rest.

**ABRSM guidance on difficulty at grade 3\***

An eight-bar piece, time and key signatures as Grade 2 with the addition of A, F, Bb majors and D, G minors.

Further use of 1st position.

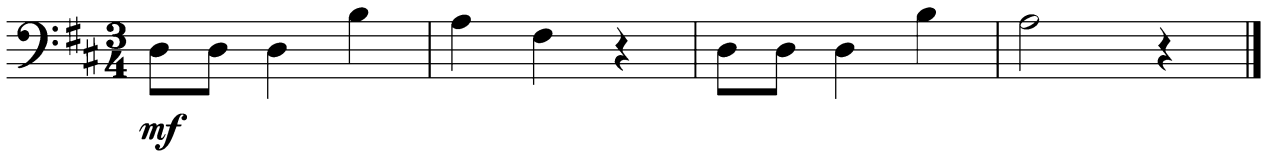
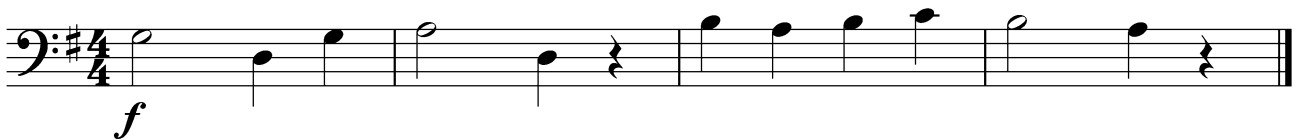
Occasional accidentals (within minor keys only).

Dotted rhythms, semiquavers and ties may be encountered.

*Pizzicato* (at end of piece only) and *staccato* may be included. Increasing use of dynamics, rests and slurs.

\*as of November 2017. Source: ABRSM website

## Grade 1 standard

**Moderato****Allegro****Andante****Risoluto****Allegretto**

Grade 2 standard

Andante

Musical notation for the Andante piece, consisting of two staves in bass clef with a 4/4 time signature. The first staff begins with a dynamic marking of *mf* and features a crescendo leading to a dynamic marking of *f*. The second staff begins with a dynamic marking of *p* and features a crescendo leading to a dynamic marking of *mf*. The piece concludes with a double bar line.

Allegretto

Musical notation for the Allegretto piece, consisting of two staves in bass clef with a 4/4 time signature and a key signature of one sharp (F#). The first staff begins with a dynamic marking of *f* and features a dynamic marking of *mp*. The second staff begins with a dynamic marking of *f* and features a dynamic marking of *mp*. The piece concludes with a double bar line.

Presto

Musical notation for the Presto piece, consisting of two staves in bass clef with a 4/4 time signature. The first staff begins with a dynamic marking of *mf*. The second staff begins with a dynamic marking of *ff*. The piece concludes with a double bar line.

Moderato

Musical notation for the Moderato piece, consisting of two staves in bass clef with a 3/4 time signature. The first staff begins with a dynamic marking of *f* and features a decrescendo leading to a dynamic marking of *p*. The second staff begins with a dynamic marking of *f* and features a decrescendo leading to a dynamic marking of *p*. The piece concludes with a double bar line.

## Grade 3 standard

**Con moto**

*f* *p* *f*

*p* *f*

**Con brio**

*f* *p* *pp*

pizz.

*f*

**Lento cantabile**

*mf*

pizz.

*f* *p*

**Maestoso**

*mf* *p* *f*

*p* *mf*